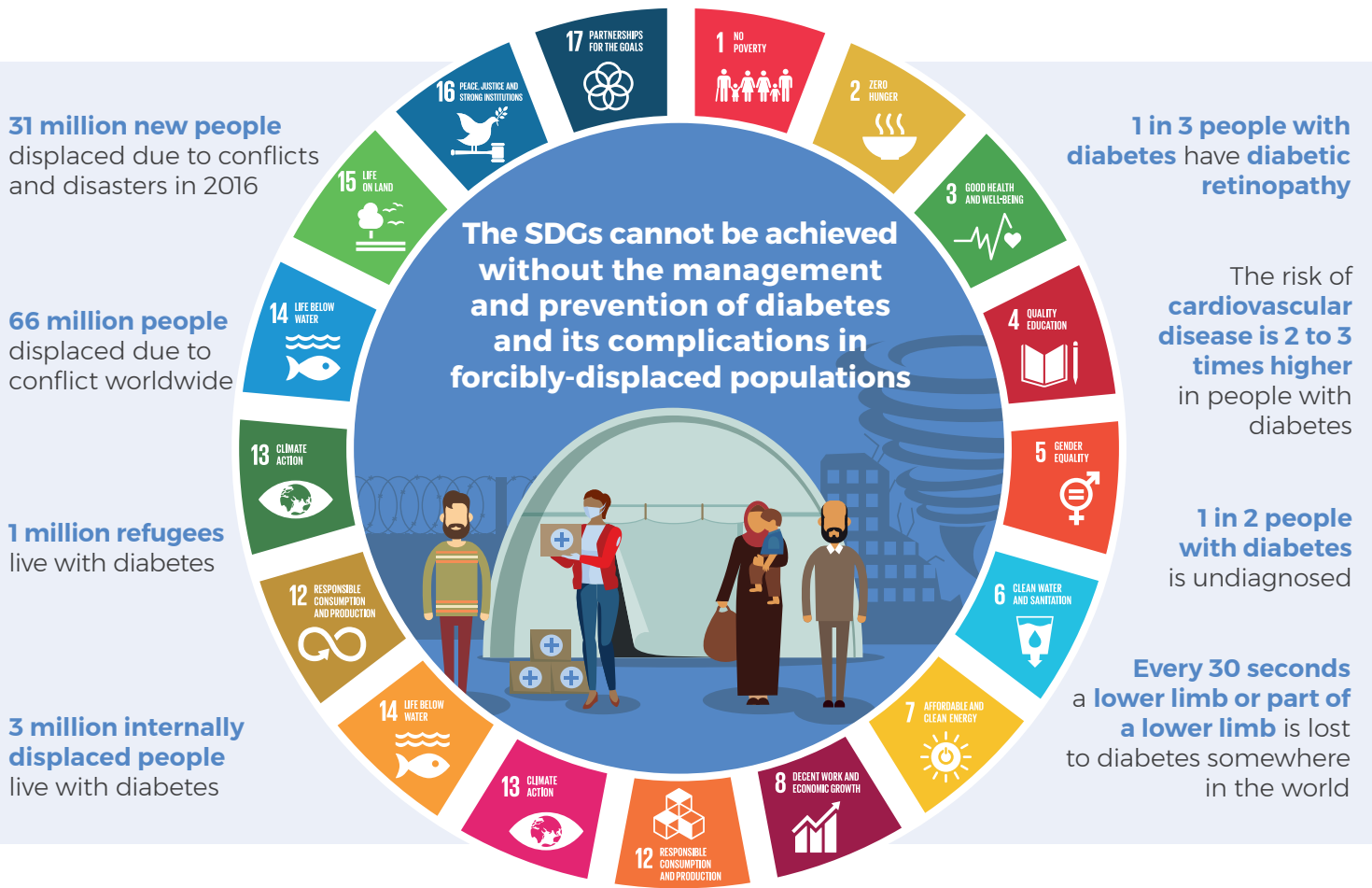


NO ONE SHOULD BE LEFT BEHIND

Act now to support people with diabetes in humanitarian settings and achieve the 2030 Agenda for Sustainable Development



Humanitarian emergencies put people with diabetes at immediate and long-term risk of life-threatening and potentially fatal complications



WHAT NEEDS TO BE DONE



IMPROVE ACCESS TO CARE AND MEDICINES

Include diabetes care as a key component of all humanitarian responses



STRENGTHEN HEALTH SYSTEMS

Generate funding to guarantee uninterrupted access to diabetes medicines and care in areas with a high burden of displaced populations



GENERATE DATA

Conduct screening and monitoring programmes to assess the exact burden of diabetes among long displaced populations and the effectiveness of current diabetes care and medicine provision

